

EUROPE APRIL 2015

Detailed maps see p 2-9.

Important update under new SLAT12 of April 12-15 for Br+Ir and NW Eu + Scandinavia caused 3day circulation delay to this forecast.

Major contrasts and rapid changes.

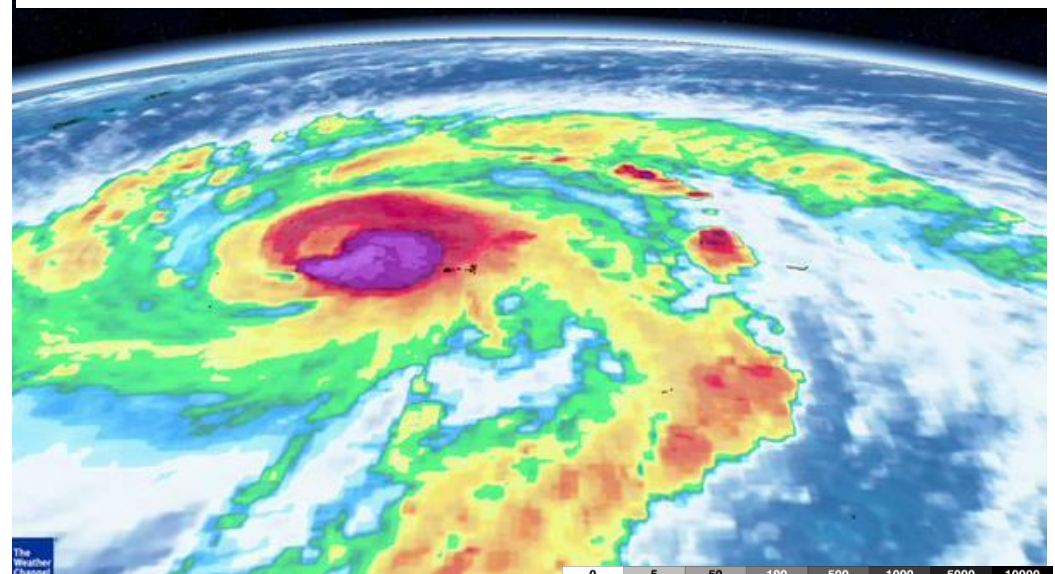
- Centre-N/W parts mostly fine High pressure in first 10 days while east varies
- Sunny High pressure from Scandinavia to Spain while central Med unsettled 16-25th
- Major thunder and hailstorm attacks to N/W with tornadoes likely ~12-15th and 26-30th

Notably large scale pressure features this April with Wild-Jet-Stream - Mini-Ice-Age circulation in huge meanders, arcs, long N-S fetches and split-jet at times. A dramatic increase in mobility in N/W and Scandinavia in last week with Azores High collapsing in last few days

• The changes in circulation giving these often extreme weather patterns will be driven by changes in the Solar-Lunar factors which govern the behaviour of the Jet stream and are predictable by WeatherAction's revolutionary Solar-Lunar-Action-Technique (now SLAT12) months ahead and nothing to do with CO2 changes under the failed 'CO2-Climate Change' 'theory'. The wild extremes are consequences of the Wild Jet Stream / 'Mini Ice Age (ie on average significantly colder) Climate decades the world has entered. Standard Meteorology will run into serious problems this month in SLAT main Red (R4 & R5) periods during which short range standard Meteorology forecasts for precipitation will generally need to be doubled and strong wind / tornado / thunder / hail risk enhanced.

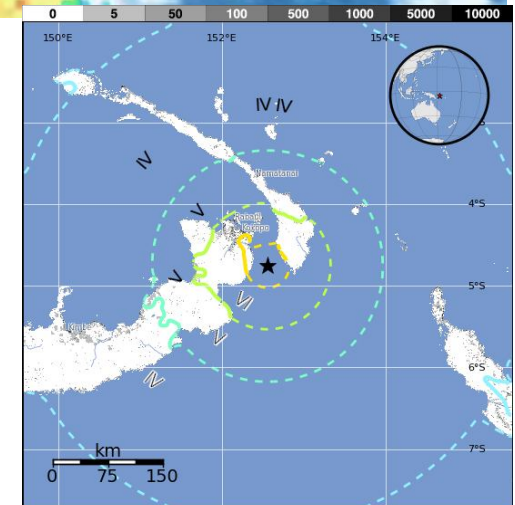
Weather Action™ © & Piers Corbyn accept no liability for any loss howsoever arising from use of forecast information. Application of forecasts is entirely at the user's risk. None of this forecast may be published or circulated in media or web or used in production of other forecasts without agreement of Weather Action & Piers Corbyn. Media use is welcome but may only be from specific issued quotes to the newspaper or media concerned or issued displays on www.weatheraction.com

End March: New **M7.5** Quake, Typhoon MAYSAK Power-Up and extra weather activity hits Europe and USA.



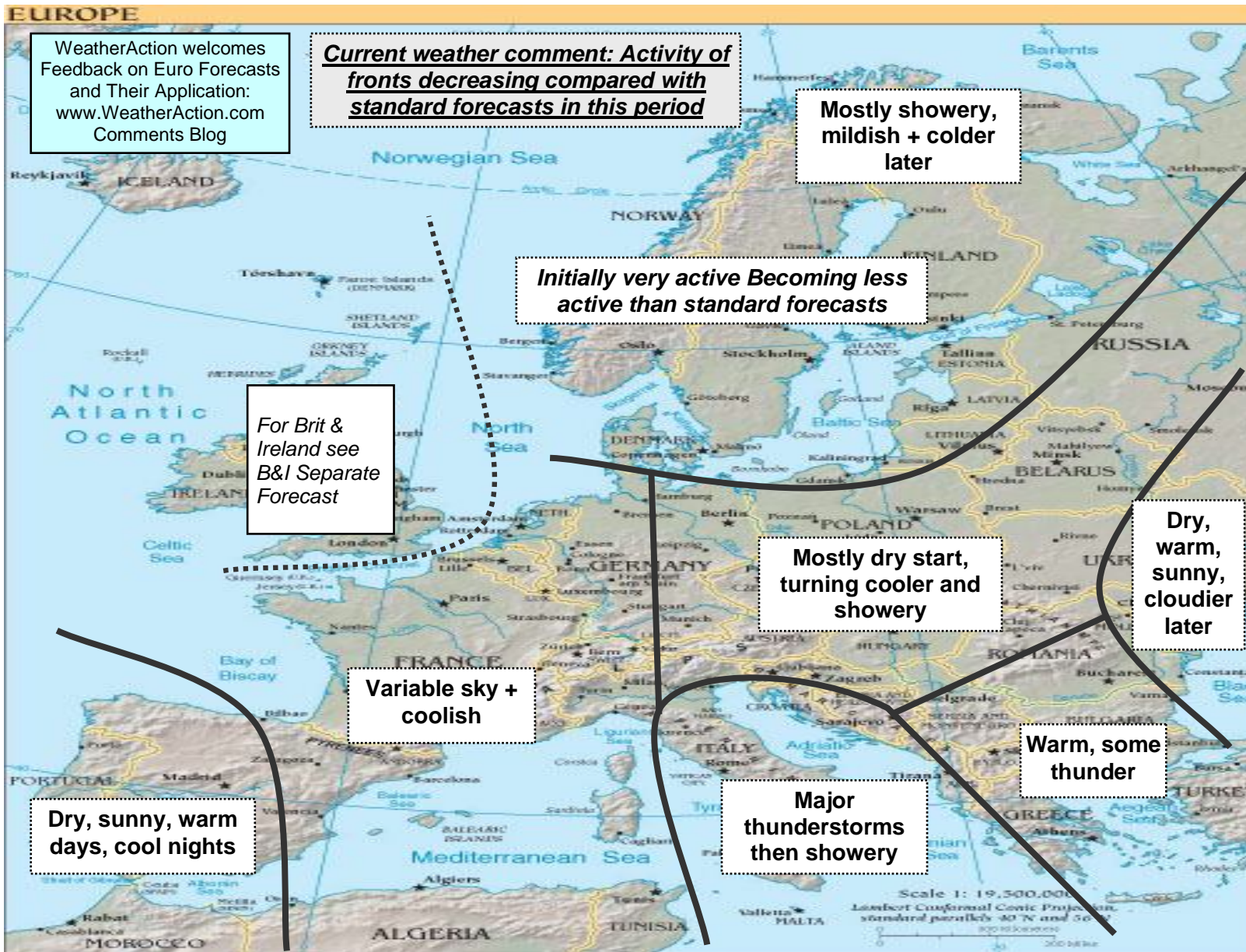
• **Events confirm effects of WeatherAction Major Red R4 Solar-Weather Effect period Mar29-31**

Maysak above and shock map of Papua New Guinea quake 29th March (right). More info & pics of PNG quake and #Maysak on twitter @Piers_Corbyn



European Forecast Noted Areas Map SLAT 12 APRIL 2015 for: 1st – 4th April (Current comment) Confidence: C = 65%

Prod 31st March from SLAT12. **Timing to 1 or 2 days (wild Jet stream makes uncertainties).** Likely success rate of weather periods is 6 or 7 basically successful of every 8



Key Weather Development Notes:
 1-4th APRIL 2015

Solar-Lunar Factors:
 R4 1st; R2 2-3

Thunder Risk:
 High → Low

Jet Stream:
 Blocked/split

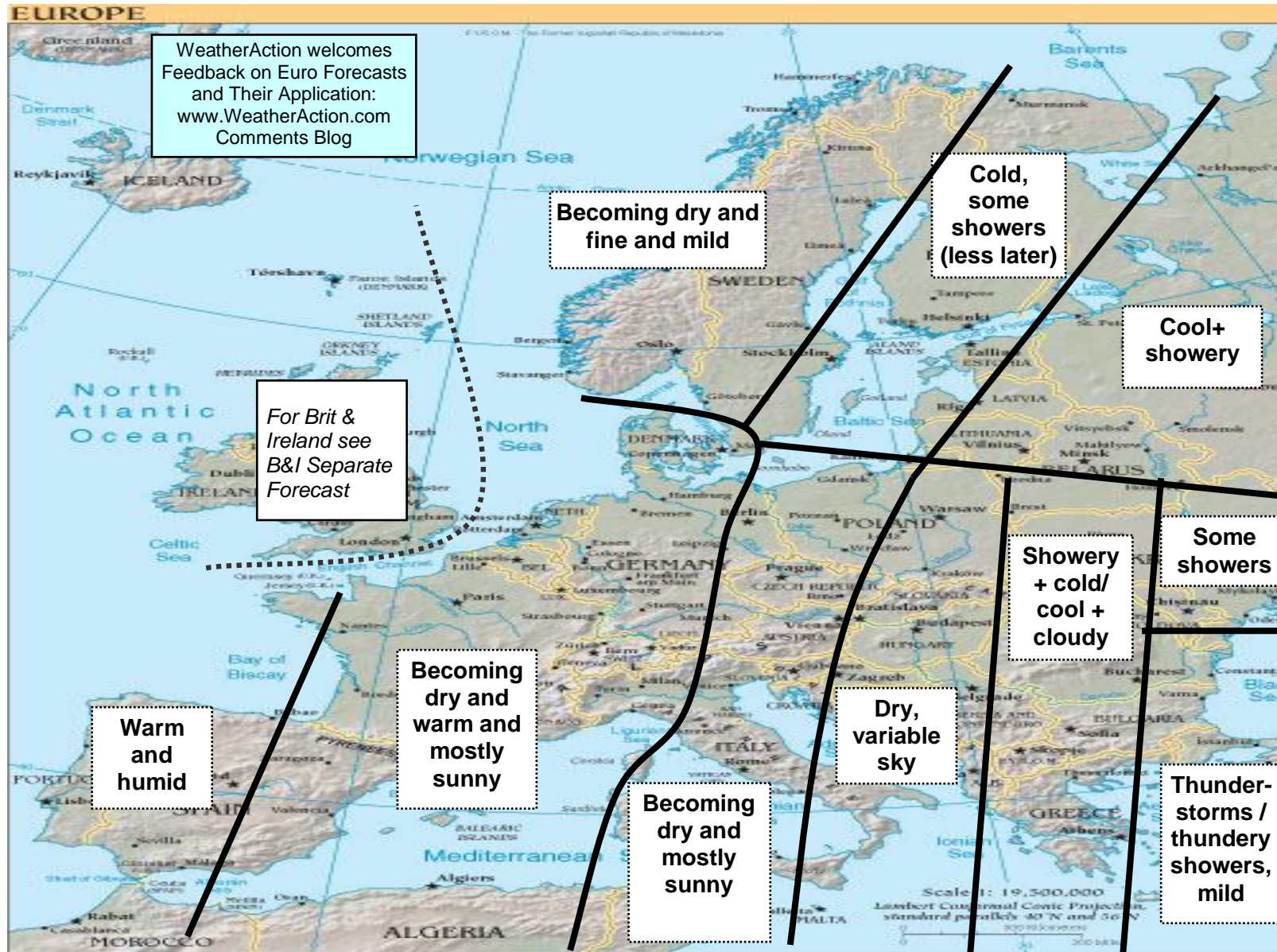
Key Development:
 Quite high pressure North Scandinavia & Scotland. Low pressure Baltic/South Scand/North Europe so Easterly flow to Britain. Low Italy. High West Russia retreating.

Turning slacker than at start of the period.

Main Uncertainties:
 Rate of decrease of frontal activity

European Forecast Noted Areas Map SLAT 12 APRIL 2015 for: 5th – 7th April Confidence: BC = 70%

Prod 31st March from SLAT12. **Timing to 1 or 2 days (wild Jet stream makes uncertainties).** Likely success rate of weather periods is 6 or 7 basically successful of every 8



Key Weather Development Notes:
 5th-7th APRIL 2015

Solar-Lunar Factors:
 NSF/Q 7th R2

Thunder Risk:
 Low

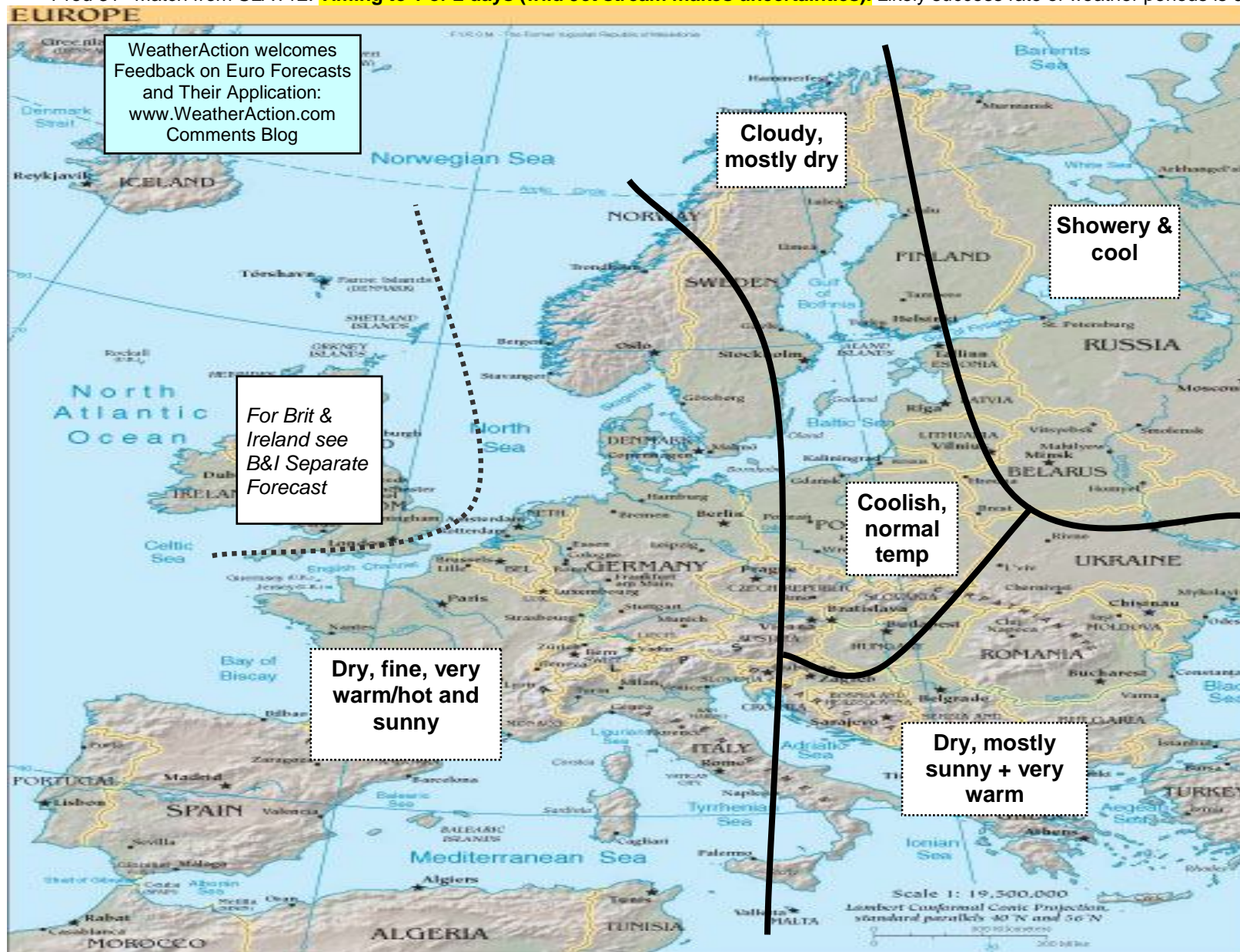
Jet Stream:
 Blocked – enormous meanders

Key Development:
 High pressure retreats Eastwards into Scandinavia from Britain and shallow Lows approach Ireland + Scotland with weak fronts crossing most of B + Ire. Low Greece. Low West Russia / Belarus

Main Uncertainties:
 Speed of advance eastwards of High into Scandinavia.

European Forecast Noted Areas Map SLAT 12 APRIL 2015 for: 8th – 11th April Confidence: B = 75%

Prod 31st Match from SLAT12. **Timing to 1 or 2 days (wild Jet stream makes uncertainties).** Likely success rate of weather periods is 6 or 7 basically successful of every 8



Key Weather Development Notes:

8-11th APRIL 2015

Solar-Lunar Factors:
NSF/Q

Thunder Risk:
Low

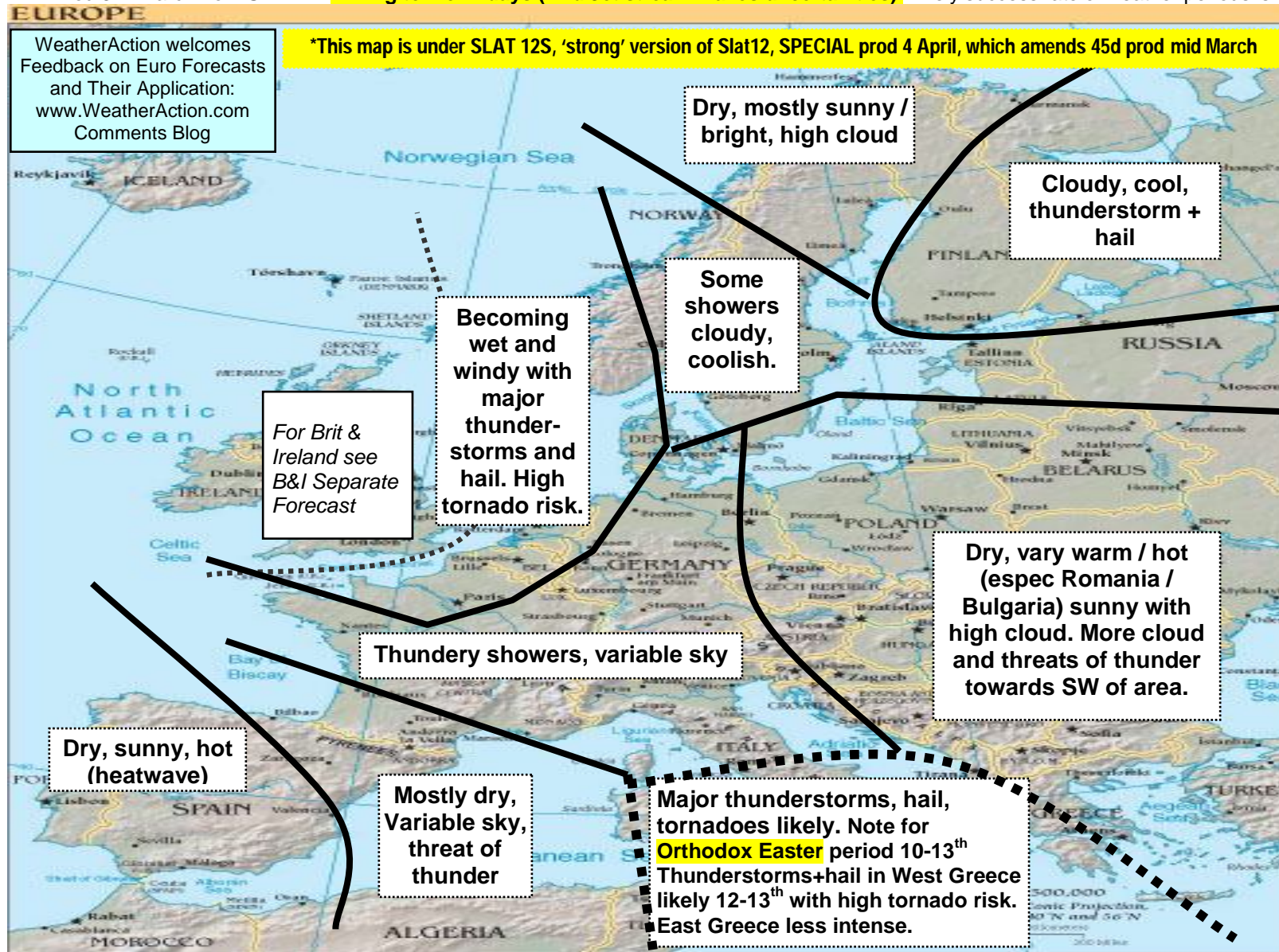
Jet Stream:
Split

Key Development:
Markedly large pressure systems.
High pressure builds quickly from S/W over Britain/France/Germany.
Weak Lows in Atlantic.
Low Finland/West Siberia

Main Uncertainties:
SE Europe

European Forecast Noted Areas Map SLAT 12(S)* APRIL 2015 for: 12th – 15th April Confidence: BC = 70%

Prod 31st March from SLAT12. **Timing to 1 or 2 days (wild Jet stream makes uncertainties).** Likely success rate of weather periods is 6 or 7 basically successful of every 8



Key Weather Development Notes:
12–15th APRIL 2015

Solar-Lunar Factors: R4
Active systems penetrating B+I+NWEu from West (under SLAT12S) whereas under SLAT 11 / weaker SLAT12 they were blocked.

Thunder Risk:
 Very high

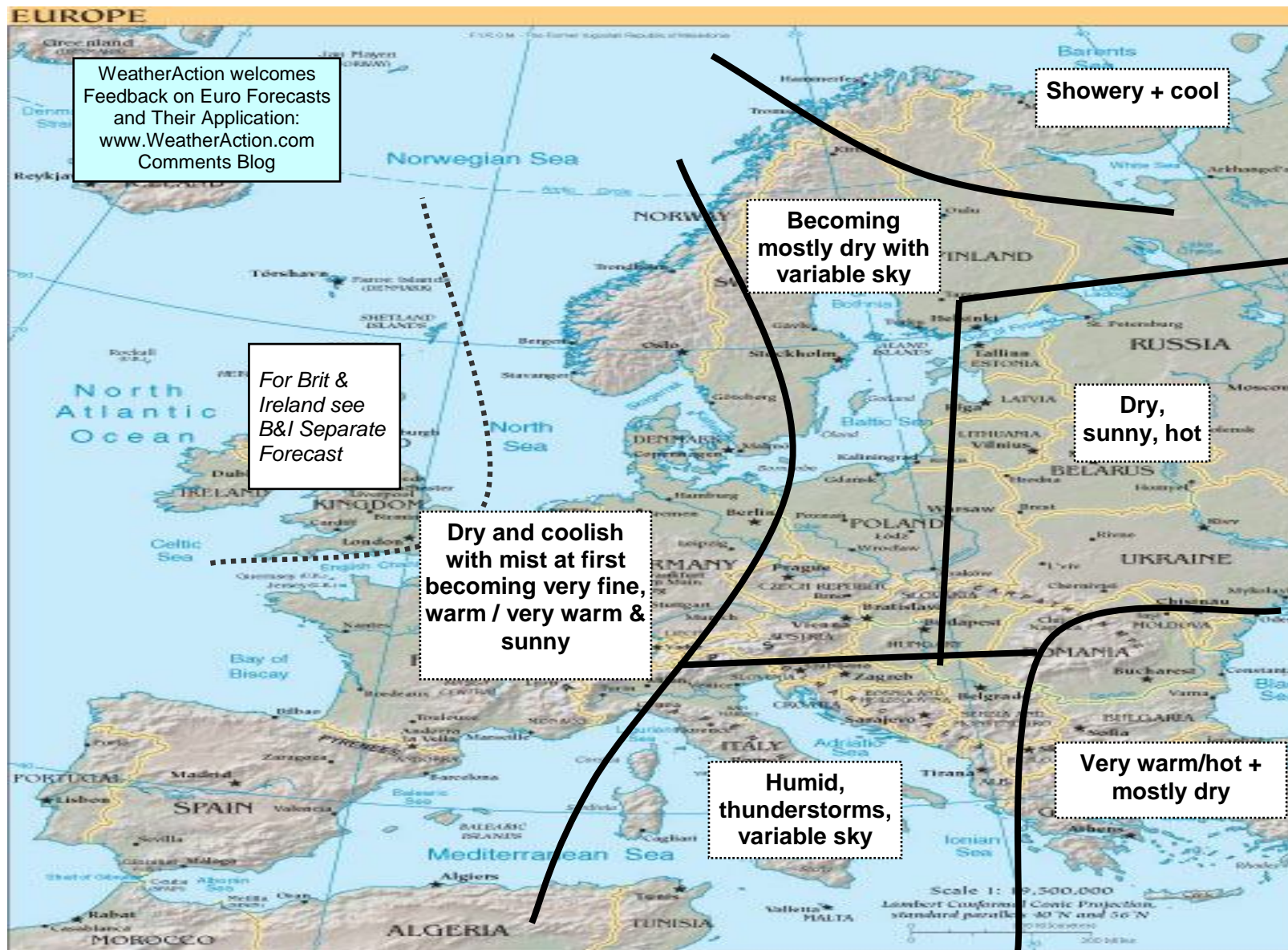
Jet Stream:
 Long fetches, South of norm.

Key Development:
 Active Low attacks B+I giving cyclonic conditions, fronts penetrate into NW Europe.
 High pressure extension from Azores into most of Iberia.
 Low central Med / S Italy.
 High Ukraine + East Eu.
 Low Finland W Siberia.
 High N Scand..

Main Uncertainties:
 Easterly penetration of active fronts form attacking B+I Low.

European Forecast Noted Areas Map SLAT 12 APRIL 2015 for: 16th –20th April Confidence: A = 85%

Prod 31st March from SLAT12. **Timing to 1 or 2 days (wild Jet stream makes uncertainties).** Likely success rate of weather periods is 6 or 7 basically successful of every 8



Key Weather Development Notes:
 16-20th APRIL 2015

Solar-Lunar Factors:
 NSF/Q (poss R2 later)

Thunder Risk:

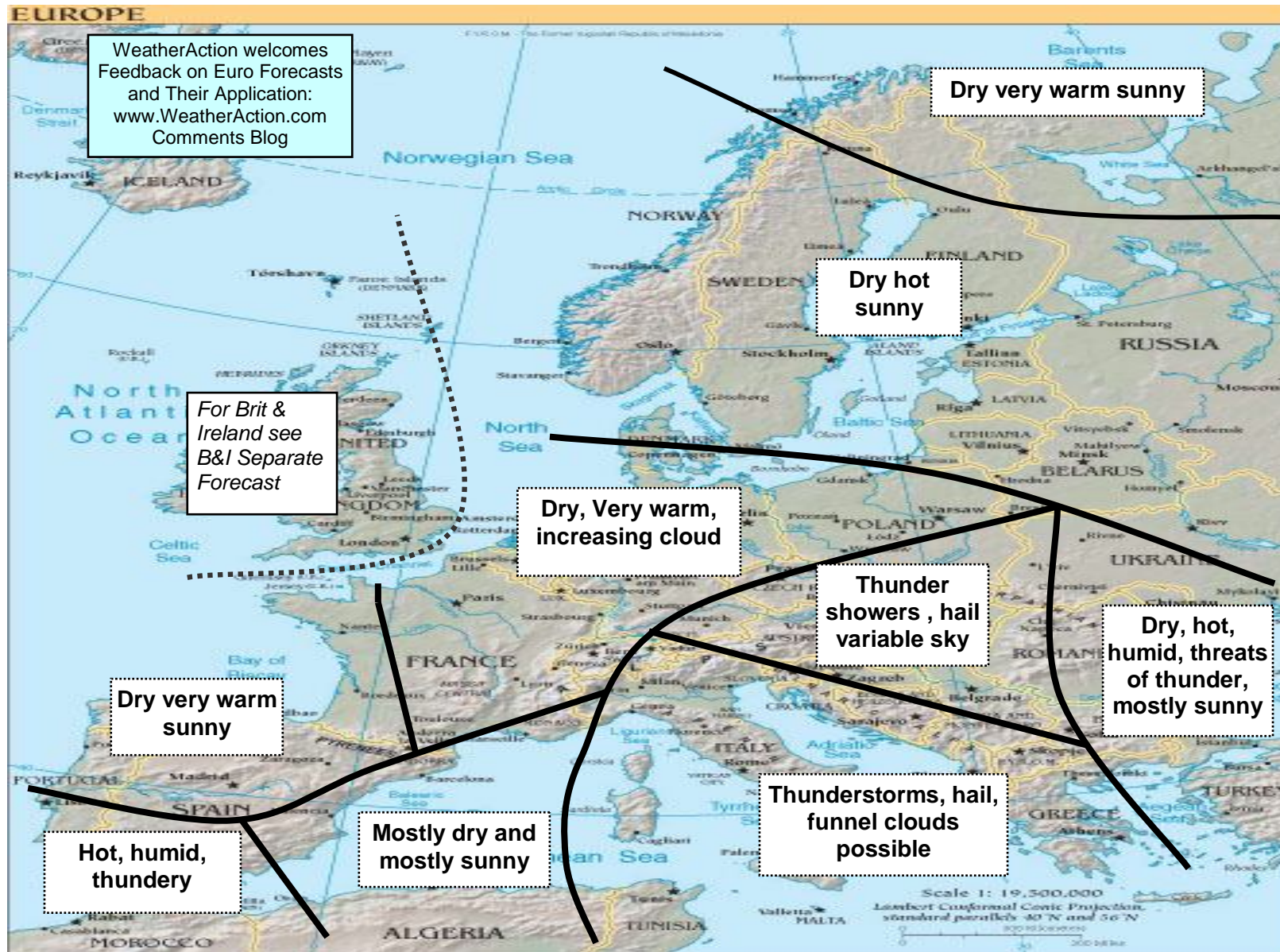
Jet Stream:
 Split

Key Development:
 High pressure dominates Britain + Ireland. Low pressure Iceland/South Greenland, low pressure West Med. Low North Scand/Arctic. Fronts possibly attacking N/W Scotland later.

Main Uncertainties:
 Speed of filling / moving SE of active B+I low in previous period

European Forecast Noted Areas Map SLAT 12 APRIL 2015 for: 21st – 25th April Confidence: B = 75%

Prod 31st March from SLAT12. **Timing to 1 or 2 days (wild Jet stream makes uncertainties).** Likely success rate of weather periods is 6 or 7 basically successful of every 8



Key Weather Development Notes:
 21-25th APRIL 2015

Solar-Lunar Factors:
R2 21-25th

Thunder Risk:
 Low/Med (intense thunder unlikely).

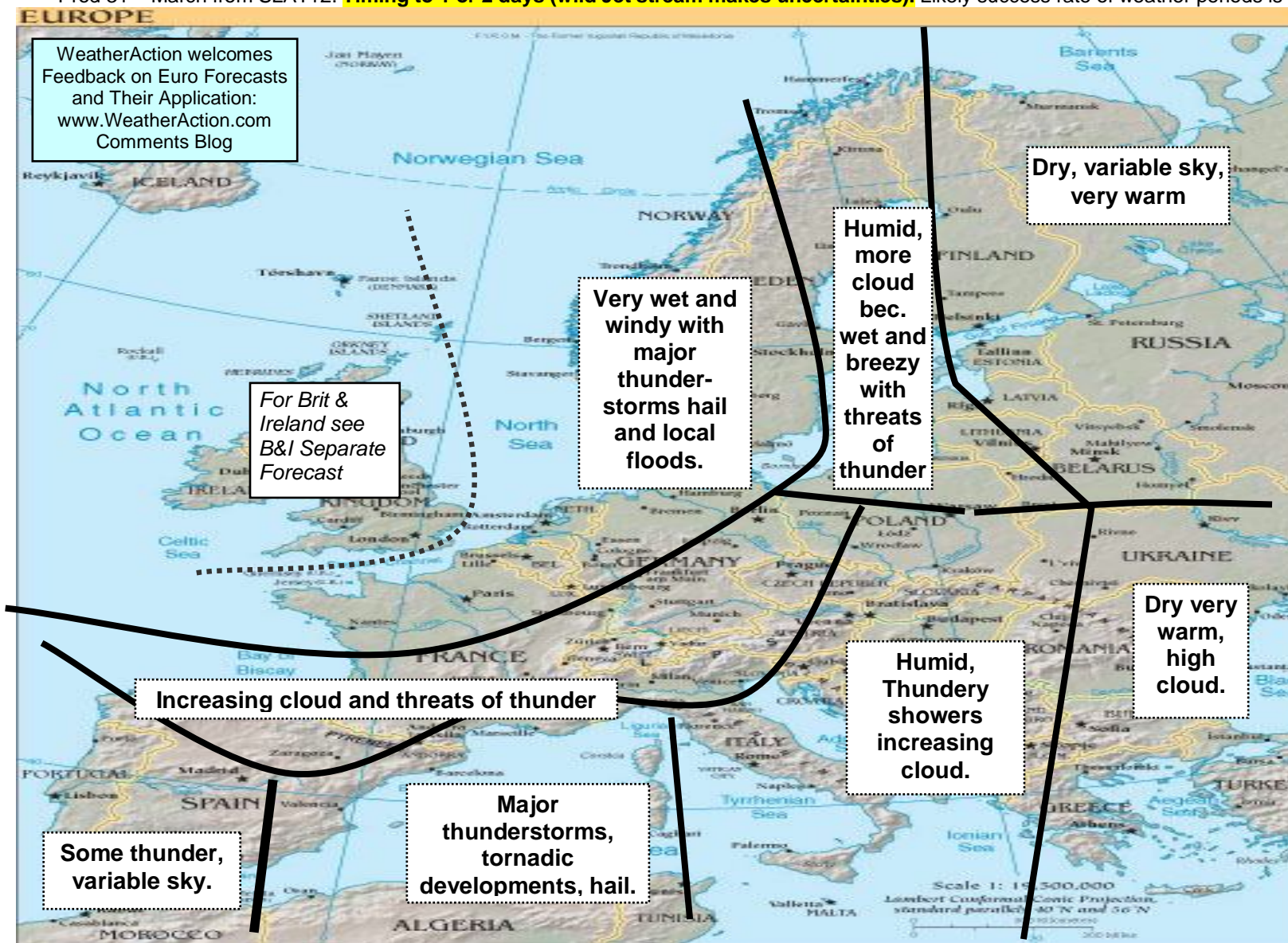
Jet Stream:
 Blocked / split

Key Development:
 Atlantic low and fronts attack from N/W affecting north parts of Ireland, Scotland + probably some of north England.
 Major High over Scandinavia and Siberia,
 Low Central Med.
 Heat low Gibraltar /S Spain
 Azores High extends to West Iberia / English Channel / West France.

Main Uncertainties:
 Penetration of fronts into Br+Ir and activity of Med, Low

European Forecast Noted Areas Map SLAT 12 APRIL 2015 for: 26th – 28th April Confidence: AB = 80%

Prod 31ST March from SLAT12. **Timing to 1 or 2 days (wild Jet stream makes uncertainties).** Likely success rate of weather periods is 6 or 7 basically successful of every 8



Key Weather Development Notes:
 26-28th APRIL 2015

Solar-Lunar Factors:
R4 26-28th

Thunder Risk:
 Very High

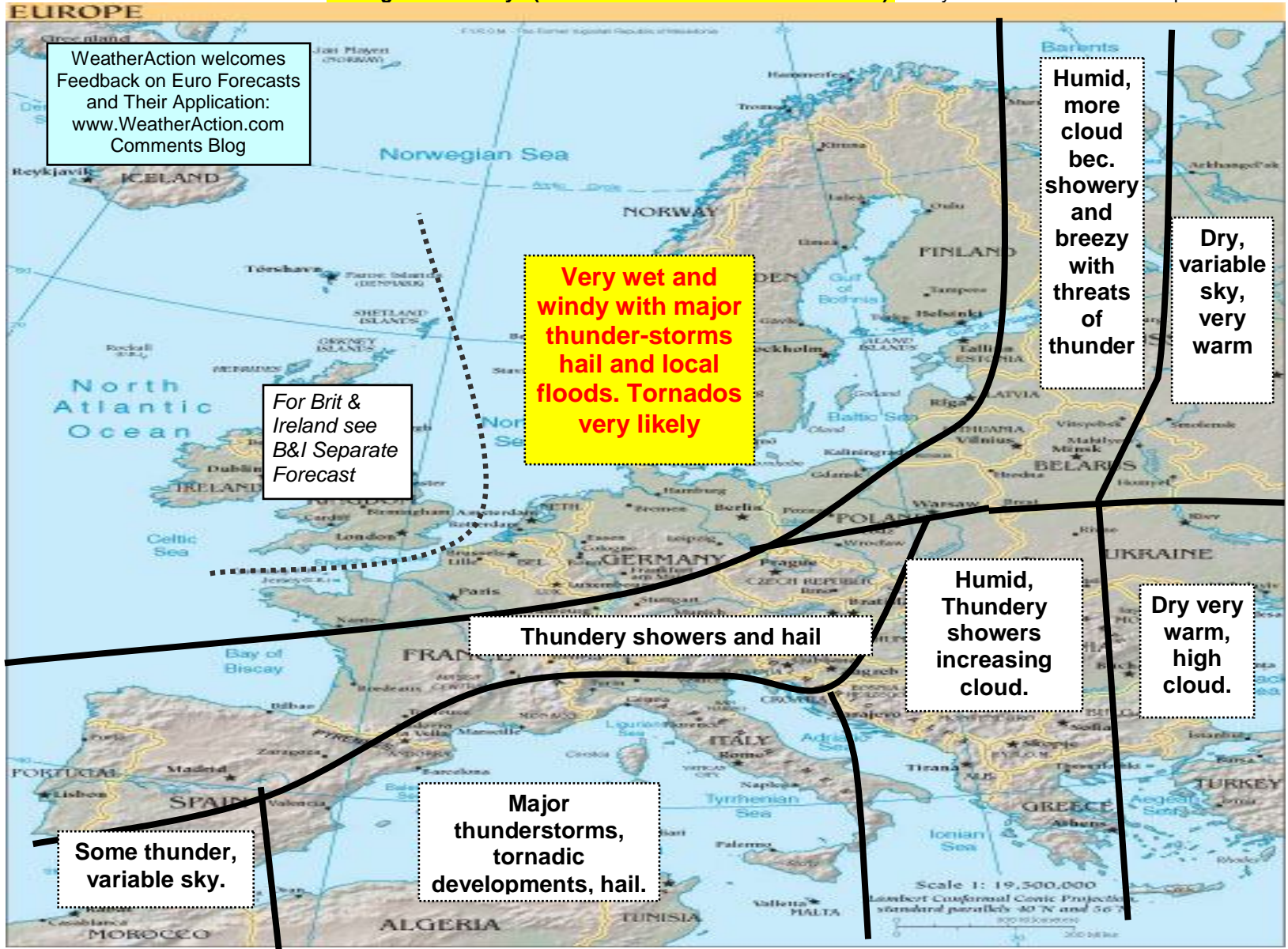
Jet Stream:
 More normal/mobile.

Key Development:
 Deep active lows attack from West, fronts cross whole of Br + Ire.
 High Block in East Scandinavia + Siberia.
 Low west Med partly linked to developing low over north Britain + west Scand.
 Azores High extends to South Iberia.

Main Uncertainties:
 Eastward progress of fronts into Scandinavia and NW Germany & France.

European Forecast Noted Areas Map SLAT 12 APRIL 2015 for: 29th April – 1st May Confidence: C = 65%

Prod 31st March from SLAT12. **Timing to 1 or 2 days (wild Jet stream makes uncertainties).** Likely success rate of weather periods is 6 or 7 basically successful of every 8



Key Weather Development Notes:
29th APRIL – 1st MAY 2015

Solar-Lunar Factors:
R5 29-30/1st May

Thunder Risk:

Jet Stream:
Somewhat south, big meanders.

Key Development:
Deep active low pressure attacks Br + Ir with fronts crossing all parts. Lows (double Low) penetrate into Scandinavia High Belarus – west Russia, Low West Med. Prob Higher pressure Gibraltar. Azores High collapsed / shifted way South.

Main Uncertainties:
West Med Low activity.